

Intercept[®] Simulation Model

**For More Information,
Please Contact Your
GED Sales Manager**

GED Integrated Solutions
9280 Dutton Drive
Twinsburg, OH 44087-1967

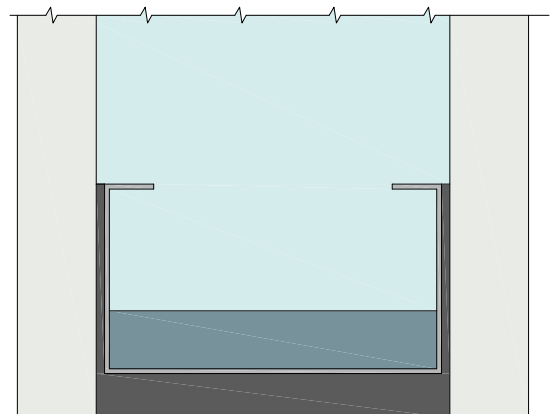
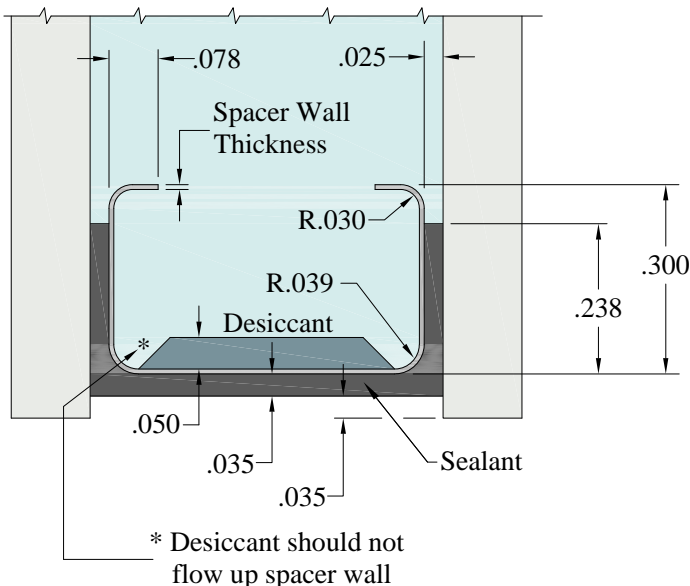
Phone: 330-963-5401

Fax: 330-425-8741

www.gedusa.com

For THERM

- ✓ Spacer wall thickness ***Blackline*** material = 0.010"
Tinplate material = 0.010"
- ✓ Thermal conductivity ***Blackline*** material = 50 W/mK
Tinplate material = 50 W/mK
- Desiccant = 0.29 W/mK
- Sealant = 0.24 W/mK
- ✓ Spacer should be below sight line
- ✓ All dimensions in inches



Inaccurate Geometry

Correct Geometry