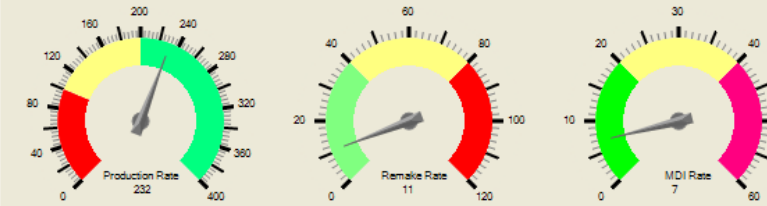


# Drive your Performance with LeanNET® i-Sight



KPI- Last Hourly Rolling Avg.(since last sample interval)



Intercept(s) - Totalized Material Usage

Machine	Unit Source	Spacer Size	#Unit	Linear Ft
WinFrameLxV1	MDI	13/32	44	264.601
		17/32	5	33.667
		19/32	6	60.400
		21/32	39	328.768
		11/32	5	40.333
	Production	0	11	110.734
		13/32	2172	16745.559
		9/16	19	243.830
		19/32	328	2852.222
		5/8	25	193.751
		21/32	597	5111.962
	Remake	11/32	70	750.691
		13/32	34	232.973
		19/32	8	66.744
		21/32	16	159.664
		11/32	6	73.058

Sheet Size	WinCut i-3 (Production)		
	Sheets	Sq Ft	Yield
<b>Stock: DS LOW E - DS LOW E GLASS</b>			
72x60	9	185.49	68.7
84x60	5	160.71	91.83
84x72	11	317.3	68.68
96x72	4	184.74	96.22
<b>Total</b>	<b>29</b>	<b>848.24</b>	<b>77.18</b>
<b>Stock: SS LOW E - SS LOW E GLASS</b>			
78x48	87	1948.4	86.14
84x72	174	6450.6	88.27
<b>Total</b>	<b>261</b>	<b>8399</b>	<b>87.76</b>

## FEATURES

- ▶ Real time logging of GED machinery data
- ▶ Production viewers for Intercept machines, grid machines, and cutting tables
- ▶ Real time manufacturing KPI (Key Performance Indicators)
- ▶ Auto E-mail messaging
- ▶ Generate electronic files and printed reports

## BENEFITS

- ▶ Takes the guess work out of IG manufacturing by logging real time data for current and historical analysis
- ▶ Supervisors now have a pulse on IG and glass production. Each viewer identifies all production data and material usage
- ▶ Real time dashboard keeps supervisors in touch with machine production rates, remake rates and MDI rates
- ▶ Improves quality by alerting maintenance supervisors to machine performance alerts
- ▶ Improves efficiency by keeping supervisors notified when machine idle times are exceeded
- ▶ Improves inventory and manufacturing control by allowing usage data to be returned to the ERP system. Production reports and graphs can be printed for any date and time range.

GIVING YOU GREATER CONTROL THAN EVER BEFORE

# LeanNET® i-Sight

Consider GED for all your needs

## i-SIGHT MODULES AND SPECIFICATIONS

### LeanNET® i-Sight Modules:

- ▶ **Data Manager: Services Module**  
Configures and controls data management from the GED machines to the SQL database.
- ▶ **Data Manager: Console Module**  
Configures and controls data management from the SQL database to the production viewers.  
Provides access to all Production Viewers and Dashboards.  
Exports data via printable reports or CSV, Excel files.
- ▶ **Data Manager: Client Module**  
Restricted version of the Console Module that can be distributed across the customer's enterprise.

### SPECIFICATIONS:

#### Data Manager Services and Data Manger Console:

Windows 2003, 3 G RAM  
320 G Hard Drive  
SQL Server 2000 or 2005

#### Data Manager Client:

Windows XP Pro, 1 G RAM  
100 G Hard Drive

#### Compatible GED Machinery:

WinCut i-3 (ver 1.00.31)  
CleanCut LA (ver 2.00.20)  
WinFrame-Lx (ver 2.03.08)  
WinFrame i-3 (ver 1.00.56)  
WinGrid T (ver 3.03.15)  
WinContour (ver 2.03.01)

Glass Fabrication

IG Spacer Fabrication

Glass Cutting & Loading

Glass Washing

Muntin Fabrication

Screen Systems

Decorative Glass  
Solutions

Window Fabrication

Cutting

Fabrication

Welding

I-3 SmartLoad Welding  
System

Cleaning

Automated Systems

Software Process  
Solutions

Material Handling  
Solutions

Training & Support

Special Systems



To learn more, call 330.963.5401,  
fax 330.963.0584 or visit us at [www.gedusa.com](http://www.gedusa.com)



Integrated Solutions

9280 Dutton Drive Twinsburg, Ohio 44087-1967