	GED Integrated Solutions, Inc 9280 Dutton Drive Twinsburg, OH 44087		Document No.: APN-0178	Date: 10/21/15
			Revision: A	
Description: Roboclean Profile Backup Instructions				
Written By: Jon Fan				
Approved By: Tony DiFiore				
Revision History:		Changed By:	Release No.:	Date:
A) Original Release		SJF		10/21/15

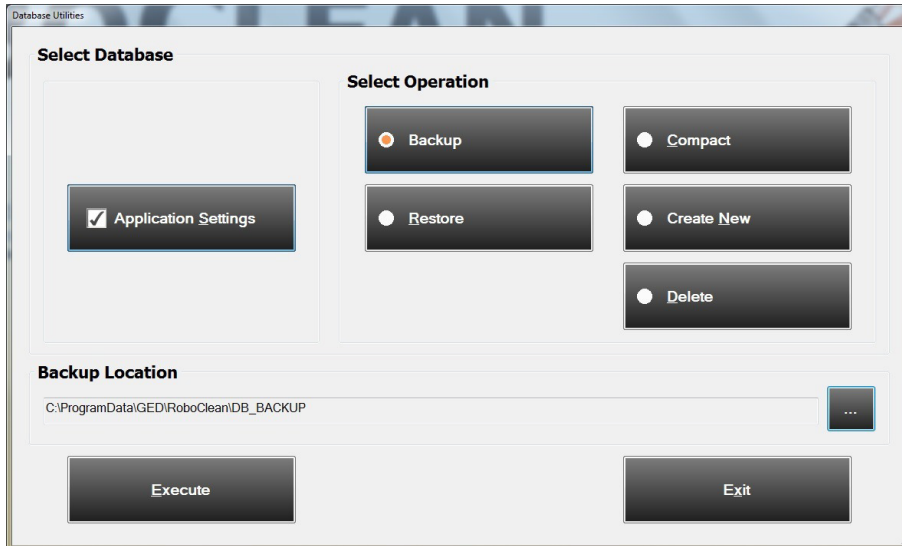
1.0 Purpose

This document provides instructions on creating backups of the profile definitions stored in the ABB robotic controller and database that is utilized by the Roboclean HMI. This information is critical in case there is a PC or PLC crash and data needs to be restored.

2.0 HMI Database Backup Instructions

Most of RoboClean's machine settings are stored in the RoboClean_Settings database. To perform database backup, follow these steps:

1. From RoboClean HMI Main screen, login as GED user.
2. Go to **Maintenance** and select the **Database Utilities** menu option.



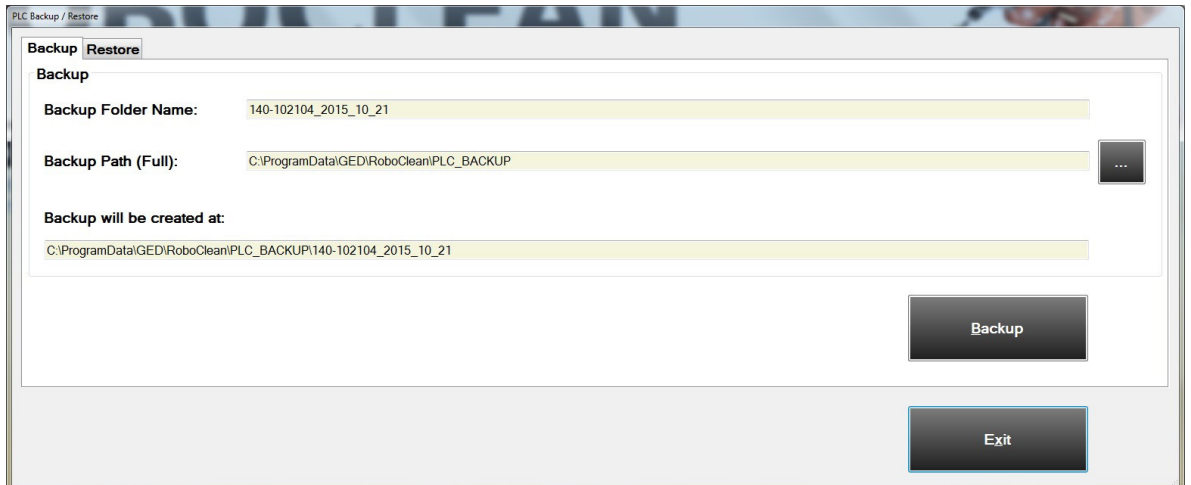
3. On the **Database Utilities** screen, check the **Application Settings** database, select the **Backup** option, and specify the **Backup Location**. The default backup folder is "C:\ProgramData\GED\RoboClean\DB_BACKUP".
4. Press the **Execute** button and confirm the message to begin database backup. Wait for the system to show a completion message.
5. The default backup file name of RoboClean_Setting database should be stored under the folder that you have specified in the format of "yyyy-mm-dd_hh-mm-ss_RoboClean_Settings.mdf", where "yyyy-mm-dd_hh-mm-ss" is the current system date and time. This backup operation also generates another two files in the same

backup folder, namely “yyyy-mm-dd_hh-mm-ss_RoboClean_Settings.evt” and “yyyy-mm-dd_hh-mm-ss_Settings.xml”.

3.0 PLC System Backup Instructions

RoboClean profile cleaning programs are stored in the ABB robotic controller. To perform a PLC system backup, follow these steps:

1. Make sure the RoboClean HMI is properly connected to the controller (make sure the system is in Auto mode with Master Start and Motor On before launch RoboClean HMI).
2. From RoboClean HMI Main screen, login as GED user.
3. Go to **Diagnostics** and select the **PLC Backup/Restore** menu option.



4. On the **PLC Backup/Restore** screen, go to the **Backup** tab. The default backup folder name should be in the format of “aaa-bbbbbb_yyyyy_mm_dd”, where “aaa-bbbbbb” is the controller ID and “yyyy_mm_dd” is current system date. The default Backup Path (Full) is “C:\ProgramData\GED\RoboClean\PLC_BACKUP” and the Backup will be created at “C:\ProgramData\GED\RoboClean\PLC_BACKUP\aaa-bbbbbb_yyyyy_mm_dd”.
5. Click the **Backup** button and wait for the message “Successfully backed up PLC system” to show up.
6. The folder “aaa-bbbbbb_yyyyy_mm_dd” should be created and stored under the Backup Path (Full) that you have specified.

4.0 Creating “Common” Backup Location

Each Roboclean PC is setup with a second hard drive partition (or “D” drive). This contains all the necessary software setup files and installations needed to configure the PC. It is recommended that the backups created above be placed onto this partition as well by doing the following:

1. Open **Windows Explorer** from the Windows Start Menu.
2. Under D drive, create a folder “Backups” if the folder doesn’t exist. Under “Backups” folder, create two more folders “HMI” and “PLC” (if the folders already exist these can be either deleted or moved to a different folder for historical recordkeeping).
3. Find “RoboClean.exe” in folder “C:\Program Files (x86)\GED\RoboClean” and copy the file to folder “D:\Backups\HMI”. This backs up the current executable file.

4. Find the folder “C:\ProgramData\GED\RoboClean\Data” and copy the entire folder to “D:\Backups\HMI”. This backs up the machine setting files (general and recognition I/O configuration, barcode format, profile pictures, etc.)
5. Find the folder “C:\ProgramData\GED\RoboClean\DB_BACKUP” and copy the entire folder to “D:\Backups\HMI”. This backs up the database and setting files.
6. Find the folder “C:\ProgramData\GED\RoboClean\PLC_BACKUP” and copy the entire folder to “D:\Backups\PLC”. This backs up the PLC system files.

Once these steps are completed the entire contents of the D:\Backups folder should be copied off to either an available network drive or USB stick (the one provided with the machine that has all the software installations and manuals is sufficient). In addition this is the folder that should be saved to GED’s network prior to each machine shipping to the customer per the instructions in GED document QTP 94-106.